

GEM NEWS

For the Idaho
GeoSpatial
Community

Winter 2011



2011 Intermountain GIS Conference

Kindra Serr, Conference Chair

This Winter 2011 Newsletter is highlighting all of the great activities and opportunities of the 2011 Intermountain GIS Users' Conference. Northern Rockies URISA is proud to sponsor the 2011 Intermountain GIS Users' Conference. This year's conference, Geospatial Rendezvous, will be held March 21-25 at Idaho State University in Pocatello, Idaho.

Registration for the conference is open and can be done quickly and easily online. Northern Rockies URISA members can attend for only \$225! Not a NR-URISA member? You can add the \$25 member registration fee when you sign up. For more information and to register, visit <http://www.intermountaingis.org/conferences.html> and click on the Registration link.

One of the goals of NR-URISA is to provide opportunities for professional training to its members. The Geospatial Rendezvous is offering two days of full workshops, as well as a selection of half day workshops. Using your input, we've assembled workshops that are relevant to your training needs. For more information, read the **Workshops** article in this newsletter.

The Geospatial Rendezvous is a great opportunity for GIS professionals to present and discuss projects and topics that are important to the community and the profession. We will have two full days of presentations, as well as a poster session. For more information, read the **Present!** article in this newsletter.

We also have great activities planned. Before the conference officially kicks off, enjoy a trip to the world famous Lava Hot Pools (See **A Warm Dip in the Pool**). Vendor's Night will be a great chance for you to talk one on one with the people that know everything about the software you use every day (see **Vendor's Night**). We will also take a glimpse into the history of the Pocatello area while dining at the Booth Barn (see **Rendezvous Banquet**).

In a time of financial straits, this conference promises to be a golden opportunity for training and collaboration for our region. The conference planning committee has worked hard to make this a conference that will benefit you professionally and financially. Register today and mark your calendar to attend this Geospatial Rendezvous.



UPCOMING EVENTS:

2011 Intermountain GIS Conference

March 21-25, 2011

<http://www.intermountaingis.org/conferences.html>

SWIG

Feb. 8, 2011

http://www.swig.gisidaho.org/upcoming_mtg.html

Idaho Geospatial Council - EC

Feb. 17, 2011

<http://www.itrmc.idaho.gov/committees.html#igc>

NW GIS Users Conf.

Oct. 17-21, 2011

<http://nwgis.org/>

GEM NEWS

Workshops

Stuart Chandler

The Intermountain GIS Conference continues its tradition of offering a diverse suite of high quality workshops.

Topics at this year's conference range from introductory level to advanced, from high-end software concepts to open source. The diverse offerings include software methods, spatial analysis, database design, data collection and processing, and remote sensing. We are also pleased to offer the URISA certified Project Management workshop, and are offering a ½ day free workshop on applying for GISP Certification.

For descriptions of available workshops, click on the "workshop" link at the conference home page at; <http://www.intermountaingis.org/conferences.html> .

The Intermountain GIS Conference workshops provide a good opportunity for professional development and continuing education. Also, think about taking a workshop at the 2011 Intermountain GIS Conference to help build points for GISP Certification.

The Conference Committee would like to thank the workshop presenters who are contributing their time in support of the Northern Rockies URISA Chapter and the Intermountain GIS Conference. Their contributions enable the conference committee to offer a high quality, low cost workshop program.

We look forward to seeing you at the 2011 Intermountain GIS Conference.



Present!

Dennis Hill and Dawn Leatham

Are you using a unique approach to a geospatial problem? Did you develop a great web application? Do you need a few more GISP points? Think about presenting at the 2011 Intermountain GIS Conference. Don't have the time to prepare a presentation? How about a poster?

CALL FOR PAPERS

The call for papers is open for a variety of topics. Track sessions will include emergency services, natural resources, remote sensing, tribal, federal, local government, utilities, RRCs, and cloud/IT topics.

If you would like to present on any of the above topics, submit your abstract electronically to presentations@intermountaingis.org.

Abstracts should be 100 words or less and should include the track you would like to present in, as well as your name and address.

CALL FOR POSTERS

Posters are invited on the topics focused on projects within or pertaining to Idaho, Montana, Wyoming, Utah, Oregon and Washington. We will give full consideration to any proposal within the NRURISA's scope. Abstracts of no more than 100 words should be submitted as soon as possible. Abstracts should clearly state the purpose of the poster and which category the poster needs to be placed in (Professional or Student).

Please submit your poster abstract electronically to presentations@intermountaingis.org.

Please include your name, address and poster topic on all submissions.

Poster guidelines:

Poster presenters will be responsible for printing and transporting their own posters. The maximum size of the poster should be no larger than 34"x44" (ANSI E).

Awards:

Awards will be given to First (\$100) and Second (\$75) place winners in both the Professional and Student categories.

GEM NEWS

A Warm Dip in the Pool

Dennis Hill

The Monday night event at this year's Intermountain GIS Users Group will be to beautiful Lava Hot Springs.

For years people have gathered at the springs to bathe, rest and worship. Many people believe that there are curative properties associated with the hot mineral water and refer to the Springs as "the healing waters" It is rumored that long ago the Springs were neutral ground and shared in peace by all.

Once part of the original Fort Hall reservation, the springs and land were part of a treaty agreement between the Indians and the US Government in the late 1800's. The federal government purchased the springs and land, approximately 178 acres including the springs.

A 1902 act granted the lands to the State of Idaho to be held by the State for public use. Later all rights to the operation, management, control, maintenance and improvement of the lands and property were vested in the Lava Hot Springs Foundation, an agency within the Idaho Dept. of Parks & Recreation.

We plan on leaving Pocatello around 5:30 and take the short 30 minute bus trip south to Lava Hot Springs to enjoy the world class hot springs. Bubbling out of natural underground springs, the hot water is laden with minerals, but has no sulfur and therefore no bad odor. Over 2.5 million gallons a day course through the springs and are diverted into the Portneuf River keeping the springs ever changing and clean. The spring's temperatures range from approximately 102° to 112° degrees.

There are several restaurants right there close to the hot pools that are all within walking distance, as well as a few "watering holes" and some other nick knock shops.

We will leave around 7pm and head back to Pocatello and the Hampton Inn.

Vendor's Night

Molly Jackson

Tuesday night at the 2011 Intermountain GIS Users' Conference is Vendor Night, and we are planning a fun one!

In addition to a little speed-dating with vendors, we are planning a scavenger hunt with a *Really Good Prize*, and a wine-tasting to liven things up.

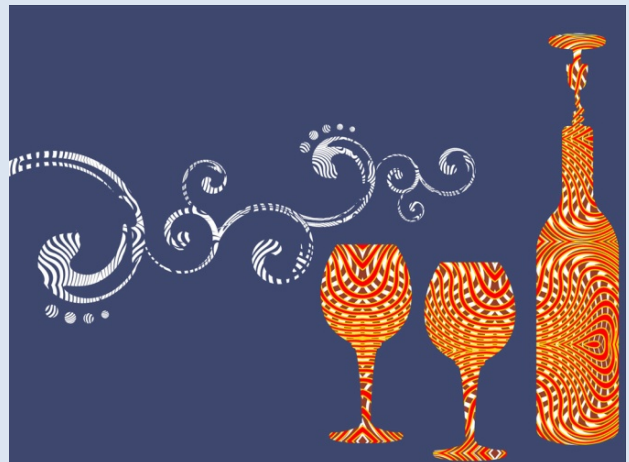
Come watch the vendors put their best foot forward in an attempt to win you over during a speed-dating round on the stage. Each vendor will get a little face time on stage to talk a bit about their company and the services they offer.

Then taste a little wine and set out to fill in your Vendor Map. Visit each booth to get information on how to locate the vendors' offices and answer questions about the exhibitors to receive a sticker for your map. All correct Vendor Maps will be entered into a drawing for the *Really Good Prize* (something a little less educational than a textbook from ESRI Press). Then taste a little more wine. . . .

During the conference there will also be a silent auction and raffle, with many items donated by the exhibitors. Proceeds from the silent auction and raffle are used for student scholarships for the conference.

This relatively laid-back conference is a great way to meet your vendors and get to know the people behind the products and services you use every day.

Any questions can be directed to the exhibitor coordinator at exhibitor@intermountaingis.org



GEM NEWS

Rendezvous Banquet

Kindra Serr

On Wed. March 23, the Rendezvous Banquet will be held at the Booth Barn. This evening promises to be fun and entertaining.



Located in the Pocatello Creek area just north of Idaho State University, the Booth Barn is a landmark and a community center for weddings, receptions, craft fairs, and everything in between. Buses will be available to take conference attendees from the Hampton Inn to the Booth Barn and back to the hotel at the end of the evening.

Once at the Booth Barn, enjoy a delicious home cooked Dutch oven dinner from Dutch Oven Delights. The banquet will be a great time to sit back and chat with other conference attendees in a relaxed setting.

We will have the great honor of hosting the Shoshone-Bannock tribe dancers and singers as part of our entertainment. We have also tentatively scheduled the Idaho Old Time Fiddlers to come and play for us.

Additional banquet tickets can be purchased when you register for the conference or at the registration desk during the conference.



Because of concerns about the weather, the conference banquet has been moved from the Fort Hall replica to the Booth Barn in Pocatello.

Excellence in the Field of GIS Award

Danielle Favreau

It is time again for Northern Rockies URISA to recognize an individual for their contributions and dedication to GIS in Idaho. Please help us by submitting your nominations by March 1, 2011.

A nominee should have significant achievements in at least one area of:

- Increase community involvement in GIS.
- Develop innovative ideas or programs for GIS.
- Develop or be actively involved in cooperative efforts to put GIS into action.
- Education/Awareness of GIS
- Organization and Leadership in GIS
- Coordination, Cooperation, and Partnership to increase GIS activity
- Funding and Resources for GIS activities
- Assessments and Adaptive Planning in GIS
- Research and Technology Development in GIS

The award will be presented during the Award's Breakfast on March 24, 2011 during the Intermountain GIS Users' Conference.

Don't miss this opportunity to recognize the achievements and contributions of your fellow GIS Professionals!

For more details, visit:

<http://www.intermountaingis.org/conferences.html>

Other Award Opportunities

Applications for the 2011 Exemplary Systems In Government Award are now being accepted. For details, visit: (<http://www.urisa.org/esig>).

Talk to your ESRI representative about nominating a colleague for ESRI's Special Achievement in GIS Award. (<http://www.esri.com/sag/index.html>)

GEM NEWS

The Many Roads to Pocatello

Kindra Serr

The geographic location of the city of Pocatello has earned it the title of the Gateway to the Northwest. The Portneuf Gap allowed easy access for stage and freight lines, and later the railroad to pass into Idaho and the states beyond.

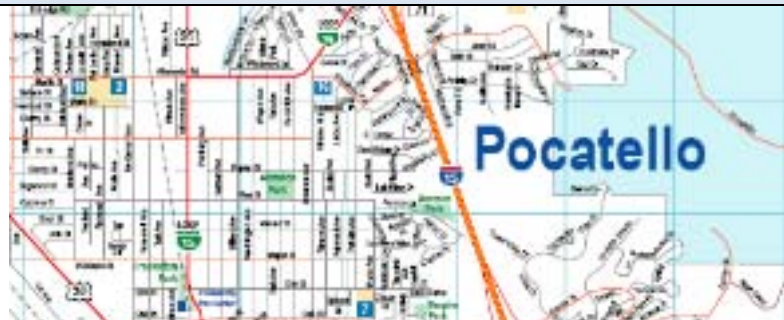
While you won't have to take a train or a stage coach to get here, travelling to the Geospatial Rendezvous is simple and easy.

Located on the I-15 corridor, as well as being the head of I-86, it seems that all roads lead to Pocatello. Once you've arrived by car, you can purchase a daily parking pass for any of the general parking lots at Idaho State University. If you are staying at the conference host hotel, the Hampton Inn, we will provide a shuttle that will run in the morning and afternoon to take attendees to and from the university campus.

While all roads may seem to lead to Pocatello, all airplanes do not. The Pocatello Regional Airport has flights that arrive daily from just Salt Lake City. If you fly into Salt Lake and do not want to take a connecting flight into Pocatello, the Salt Lake Shuttle service can bring you to Pocatello for around \$40 per trip. Mention you are attending this conference and you will get \$3 off per trip and can be dropped off at the Hampton Inn.

Once you are here, you'll need a place to stay. Since I don't have enough beds at my house for everyone, we have reserved a block of rooms at the Hampton Inn for the special conference rate of \$79 an night. When making reservations, use the code GIS. Call 1-208-233-8200 or visit www.Pocatellosuites.Hamptoninn.com to make reservations. These rooms are reserved until February 21, so act now.

Feel free to contact me with any questions you may have on travelling to Pocatello. All of the above information can be found on our website at <http://www.intermountaingis.org/conferences.html> under Accommodations and Travel Information.



What to do in Pocatello

Kindra Serr

Having lived in Southeast Idaho for my whole life, it took living in Pocatello to help me realize what a wonderful town it really is. It is centrally located to allow access to a variety of fun and entertaining activities. From car shows to beautiful hiking trails, Pocatello truly offers something for everyone.

Here are some highlights that may interest you during your stay in the Smile Capital of the world:

- **Chrome in the Dome**- If you plan on coming a little early for the conference, this car and bike show at Holt Arena will be March 18-19. Tickets are only \$5.
- **Lava Hot Springs**- Lava is just a short drive away from Pocatello. A conference event has been planned to visit this historic and relaxing site.
- **Pebble Creek Ski Area**- Yes, there still may be snow in March. Offering 54 runs, the ski hill will be opened Wednesday through Sunday, 10:30 am to 5:30 pm.
- **Idaho Museum of Natural History**- Located on the ISU Campus, conference attendees will be allowed to view the museum free of charge. The museum will be opened Wednesday through Saturday in the afternoon during the conference week.
- **Center Stage Playhouse**- *The Sound of Music* will be presented in March 2011. For ticket information, go to www.centerstageplayhouse.com.
- **Museum of Idaho**- Located in Idaho Falls, the museum will be presenting *Bodies: The Exhibition* while the conference is in session.

These activities plus a variety of restaurants makes Pocatello a very diverse and exciting place to visit. For more information, please email me at confchair@intermountaingis.org.

Why become a member of Northern Rockies URISA?

Our mission is to provide an objective educational forum, to foster the exchange of ideas, and to promote professional interaction, stimulate research, encourage publication, and generally aid the advancement of its members.

What do you get for your \$25.00/year

- A great bi-annual GIS Conference where GIS Professional can present their work and network with other professionals around the state
- Sponsorship for many local/regional meetings like SWIG and GIS Day activities like ISU's Chilli Cook-off
- Reduced rates for workshops
- Advocacy – Through URISA, your voice can be heard on national issues such as the NCEES Model Law and the recent MAPPs sponsored legislation such as the “**Federal Land Asset Inventory Reform (FLAIR) Act**”.

GISCI Invites Comment on Proposed Examination Requirement

Press Release

January 28, 2011: The GIS Certification Institute (GISCI) today made public a proposal to update requirements for GIS Professional (GISP) certification. Key among the proposed updates is the addition of a required examination. The Working Group that prepared the proposal recommends that the exam be based on the U.S. Department of Labor's new Geospatial Technology Competency Model and related resources.

The "GISP Certification Update" proposal is available for public review at <http://www.gisci.org>, along with instructions on how individuals can share their views about proposed changes. As part of its deliberations the GISCI Board of Directors will consider comments received between February 1 and February 28, 2011. A Board decision about proposed changes is expected in April, 2011.

GISCI has certified nearly 5,000 GISPs since its founding in 2004. The purpose of GISP certification is to advance the GIS profession by promoting competent and ethical practice. The goal of the GISP Certification Update Initiative is to strengthen GISP certification by increasing its value to individual GISPs, to the profession, and to society.

For more information about GISCI and GISP certification, visit <http://www.gisci.org>.

From GIS Certification Institute Newsletter: January 28, 2011

Northern Rockies URISA Contacts:

President:

Donna Phillips

dphilips@cityofhaydenid.us

Vice President:

Vacant

Secretary:

Danielle Favreau

Danielle.Favreau@idwr.idaho.gov

Treasurer:

Betty Conces

bconces@kcgov.us

Board Members At Large:

Jennifer Bowles

jbowles@kcgov.us

Dale Lineman

Dlindeman@usbr.gov

Shawn Stubbers

sstubbers@cityoflewiston.or

WEBSITES FROM THIS EDITION

NORTHERN ROCKIES URISA:

www.intermountaingis.org

URISA

www.urisa.org

ESRI

www.esri.com

GISCI

www.gisci.org



PO Box 2924

Hayden, ID 83835